

2026 Members

DEALER MEMBERS

AmeriGas Propane LP
 Blossman Gas, Inc.
 Cajun Propane of Lafayette
 Ferrellgas
 Harrell Gas, Inc.
 Jim's South Butane Propane
 LacoX, Inc.
 Lake Arthur Butane Co.
 Metro Lift Propane
 National Welding Supply Co.
 Neill Gas Inc.
 O'Nealgas
 Pinnacle Propane
 Sabine Country Butane Gas

ASSOCIATE MEMBERS

Bergquist, Inc.
 Gas Equipment Co., Inc.
 Hercules Transport Inc.
 Lin's Propane Trucks
 Martin Gas Sales
 Meeder Equipment
 Midstream Transportation Co. LLC
 Quality Steel
 Targa Resources

AFFILIATE MEMBERS

ABC Home Services, Inc.
 Anthony's Feed & Farm Supply
 Br Welding Supply LLC
 Broussard's Grocery & Deli Inc.
 Country Store
 Courville's Farmer Mart Inc.
 Crowder Center
 Florida Discount
 Grolee Express Inc.
 Hd Riverstop LLC
 La88 Discount Food Mart

March 2026

E-Newsletter

Boiling and Broiling!

Spring has sprung and crawfish season is officially in full swing! With spring here and summer temps on the horizon, make sure you enjoy our taste of moderate weather while it lasts!

Don't forget! Companies that distribute hazardous materials are required by law to have a 24-hour emergency contact in place. The LPGA voted in 2025 to discontinue their service for LPGA-ECC as an option, so **ALL COMPANIES ARE RESPONSIBLE FOR THEIR OWN EMERGENCY SERVICE.**

Make sure your customers have the correct emergency number and are only using it in cases of a true emergency. They should not be utilizing the emergency number to get in touch with your company because the store location won't answer the phone or no one has returned their call. We take emergencies very seriously in our industry and abuse will not be tolerated.

Please make sure your company has an emergency contact system in place. In the propane industry, safety is always of utmost importance and should be front of mind! Remember to educate your customers on the importance of your company's ECC number but not to abuse it. As always, if you have any questions or concerns, please do not hesitate to contact our office.

As always, if you have any questions or need any information regarding the association, please contact the LPGA office at 225-763-8922 or email our Executive Director Randy Hayden at randy@ccilouisiana.com.



**Meeder
Equipment**
When Quality Matters.™



Give us a call...
 Your Meeder Equipment Company Representative
 in Louisiana is:

Joe Ezernack



Cel. (903) 530-6954 • joez@meeder.com • www.meeder.com

Lakeview Discount
Major Discount
Maxi Mart/Gas Allocations
Morse Grocery
Narjis Inc.
Poydras Junction Hardware
Railside Feed & Supply, LLC
Riverview RV Park
RP Custom Trailers & Service
Service Lumber Company of Oak
South-End Country Mart Inc.
Stanford's True Value Rental
Taz Mart
Us Tobacco Outlet LLC
Wesco Gas & Welding Supply Inc.
Xtreme Hardware LLC

This is the most current list of paid members we have as of March 30, 2026. If you have any questions, please reach out to the LPGA office. Thank you to those members who have already paid and turned in dues for 2026!

**SAVE THE
Date**

**2026 APGA/LPGA
SUMMER
CONVENTION**

**June 28-July 1, 2026
Hilton Hotel
Pensacola Beach, Florida**

2026 Calendar of Events

April 16-21: Southeastern Convention & International Propane Expo, Music City Center-Nashville, TN.

June 1: Louisiana Legislative Session Adjourns.

June 7-9: NPGA Propane Days, Hilton Washington, DC-Capitol Hill.

June 29-July 2: APGA/LPGA Annual Summer Convention, Hilton Hotel-Pensacola Beach, FL.

June 30: Second Quarter Board of Directors Meeting, Hilton Hotel-Pensacola Beach, FL.

September 2026: Third Quarter Board of Directors Meeting-Date and Location TBD.

November 5-6: State Leadership Summit, The Capital Hilton-Washington, DC.

December 2026: Fourth Quarter Board of Directors Meeting-Date and Location TBD.

Help Support the Industry by Participating in the Annual Retail Propane Sales Report

The survey window for PERC's 2025 retail propane sales report is now open through May 15!

This report has become the benchmark for understanding where our industry stands — and where it's headed. That clarity is only possible because propane professionals across the country take the time to participate. That's why PERC is asking for your help.

Your responses remain strictly confidential and anonymous. Only aggregated summary statistics are reported. Individual company data is never shared with third parties. In preparation for the survey, please make sure you have the appropriate contact information on file with PERC. If you are unsure whether your info is correct, please email salesreport@propane.com.

Submit Your Information → [HERE!](#)

World Events and Bulk Plant Security

According to the Department of Homeland Security's Cybersecurity and Infrastructure Security Agency (CISA), there are currently no specific cyber or physical threats to critical infrastructure related to recent military operations in Iran. However, now is an appropriate time to review and reinforce your security practices.

Work closely with your IT department or service provider to ensure software is updated and cybersecurity protections are current. Many of CISA's recommendations can be implemented directly through your IT partner. Employee training is equally important. Ensure staff can recognize phishing emails, suspicious links, and social engineering attempts, and understand how to report them promptly.

Remain vigilant about physical security at your locations. Suspicious activity may include individuals photographing bulk plants, attempting to access restricted areas, asking detailed questions about operations or vehicles, or flying drones overhead. Reporting suspicious activity is a key part of an effective security plan.

If you observe suspicious activity:

- Follow your company's security plan.
- If appropriate, attempt to communicate directly.
- If communication is not possible, document details such as vehicle make, model, color, and license plate, and notify local law enforcement.
- Notify your state association.

If a drone is flying over your property, the FAA advises:

- Attempt to identify and communicate with the operator, if possible.
- If the drone appears threatening or the operator cannot be identified, contact local law enforcement or the FAA.
- Do not attempt to shoot down a drone; doing so is dangerous and illegal.

If you see something, say something. Review your security plans with employees and partners regularly. If you have questions about this or other security topics, contact NPGA's Senior Manager for State Association Relations, Eric Sears, at esears@npga.org.



LCR.iQ™ METER REGISTER AND DATA CONTROLLER



- HIGH-RESOLUTION HD DISPLAY
- LARGE DIGITS FOR EASY VIEWING
- CONFIGURABLE FUELING DATA
- SMART KEYS FOR GUIDED OPERATION
- LARGE KEYS FOR EASY OPERATION
- PANEL MOUNT ENCLOSURE OPTION
- METER MOUNT BASE



Atlanta GA
(800) 241-4155

Houston TX
(800) 334-7816

Little Rock AR
(800) 643-8222

Chandler OK
(800) 763-0953

Indianapolis IN
(800) 241-1971

Richmond VA
(800) 368-4013

Dallas TX
(800) 821-1829

St. Louis MO
(800) 423-4685

Fayetteville NC
(800) 447-1625

Kansas City MO
(800) 821-5062

Sebring FL
(800) 821-0631



Tracy Wells

www.gasequipment.com

Low costs, low emissions, high performance: Propane school buses gain popularity around the nation

As school districts across the country work to modernize their fleets, many are discovering that propane buses can serve as a practical alternative. More than 1,000 districts in the United States are now using propane buses.

“Louisiana has been a little slow to reap all the benefits of propane-powered buses but that is changing,” says Randy Hayden, Executive Director of the Louisiana Propane Gas Association.

“We have always supported the philosophy of ‘All of the Above’ when it comes to supporting transportation fuels. We believe the free market should make these decisions, not government mandates. And when free enterprise decisions are made for school buses, propane-powered vehicles are very competitive both environmentally and economically,” Hayden adds.

According to the Propane Education and Research Council (PERC), propane is a low-carbon, near-zero alternative energy source that delivers environmental and financial benefits. PERC said its studies show that propane school buses produce up to 96 percent fewer toxic emissions than diesel buses, dramatically reducing nitrogen oxides (NOx) and virtually eliminating particulate matter – pollutants that have been linked to asthma and other respiratory problems.

“There’s no smell, no fumes – nothing for the children to smell,” bus driver Dawn Tiemann of Henrico County Public Schools in Virginia told PERC.

Students and drivers on propane buses aren’t the only ones who experience healthier air quality. PERC noted that the use of propane buses means fewer emissions in neighborhoods, school parking lots and bus stops – areas where parents, teachers and the general public live, work and travel.

In addition to environmental benefits, proponents say propane buses offer cost savings to school districts without sacrificing driving range, reliability or performance. According to PERC, the fuel costs for propane buses is up to 50 percent less than diesel buses. They also eliminate the need for costly filters and fluids needed on new diesel buses. Plus, new propane buses cost about one-third the price of new electric buses.

A June 2025 report from Minnesota Clean Cities found

that the average fuel cost savings were approximately \$134 per month per bus, based on cost and maintenance differences. In addition, the report showed that propane bus maintenance costs were about 32 percent lower compared to diesel buses, and the average total cost of ownership was approximately \$43,500 less than diesel alternatives over the vehicle lifetime.

“I was excited about buying buses for less money and realizing that the overall cost of ownership was going to be significantly lower,” Amy Rosa, director of school safety and transportation at Wa-Nee Community School Corporation in Indiana, told PERC. Rosa’s district operates a mixed fleet that includes 25 propane buses. “We offer all of our extracurriculars at no cost to students, so they don’t have to pay for travel,” Rosa added. “Every year, we save money so that our kids can continue in sports and music programs with no fees. That’s our goal – to continue to save money for our students and our taxpayers.”

Around the country, drivers have also reported noticeable operational improvements when using propane buses. These include quiet engines, smooth acceleration and reliable performance across various climates. The benefits include better performance in stop-and-go traffic and a better ability for drivers to hear what’s happening inside the bus. Proponents are optimistic that this will lead to long-term driver satisfaction and, in turn, stronger staff retention and more consistent bus operations.

“The propane buses are definitely quieter. In fact, one of the few complaints we hear from parents is that they can no longer wait to hear the diesel bus chugging down the road to send their kids out in time,” says Hayden.

As school systems around the nation continue to evaluate cleaner transportation options, propane is proving to be a viable, proven solution that is already delivering measurable benefits.

“The fueling infrastructure for propane is relatively straightforward to install and maintain, with widespread availability of propane suppliers and service technicians,” the Minnesota Clean Cities report noted. (Propane buses) effectively bridge the gap towards a cleaner transportation future while districts also consider the evolving landscape of propane vehicle technology.”

Working Sun Up to Sun Down

So far in 2026, 16 states have introduced more than 20 bills that would make either standard time (ST) or daylight saving time (DST) permanent. Federal legislation has also been introduced to make DST permanent across the country, which would in effect take away the ability of states to set their own laws in this regard. Currently, 48 states observe daylight saving time, with the exceptions being Arizona and Hawaii.

The debate between ST and DST is especially notable in states north of the 37th parallel – above which 80% of all propane gallons are sold – given the reduced amount of sunlight they receive during the winter months when propane demand peaks. And the further north a state is located, the less daylight they receive during the heating season. For example, Minneapolis, Minnesota is situated on the 45th parallel. Sunrise on January 15, 2026 was 7:48am. If Minnesota made daylight saving time permanent, sunrise in the city on January 15 would be 8:48am, an hour later. For drivers starting their delivery routes in the early morning, this would mean more time driving in the dark with reduced visibility. However, for drivers making deliveries in the evening, observing

year-round DST would delay sunset by an hour.

For bobtail and transport drivers who start their days early, they may see more value in continuing to observe ST. And for drivers who start their routes later in the morning and work longer into the evening, they may prefer to have year-round DST. In the end, the benefits and drawbacks of altering time would impact each marketer differently, depending on where they are located, the types of customers they serve, and driver preference for more sunlight in the morning or evening hours.

For more information on state legislative efforts to “lock in the clock,” contact NPGA’s Senior Director of State Advocacy & Affairs, Jacob Peterson, at jpeterson@npga.org.




YOUR PARTNER

in Safe, Dependable Propane Transport.

Supporting you with consistency, safety, & care.


LOGISTICS

Contact Jenny Bannister

 936-590-6006

WHOLESALE PROPANE

Contact Michael Mayo

 210-325-2046

OSHA's New Safety Champions Program

The Occupational Safety and Health Administration (OSHA) recently launched their Safety Champions Program (SCP), which replaces the OSHA Challenge Program. The SCP is a voluntary initiative that helps employers develop new and/or improved Safety and Health Programs (SHPs). David Keeling, Assistant Secretary of Labor for OSHA stated in a Safety Champions webinar that this is one way of meeting employers where they are, as everyone is not in the same place in their safety journey. The goal of this program is to prevent workplace injuries, illnesses, and deaths while also minimizing suffering and financial burdens that these incidents could cause the workers, families, and employers.

The SCP is a self-paced, progressive framework focused on the seven core elements of OSHA's Recommended Practices for Safety and Health Programs (OSHA Publication 3885):

- Management Leadership
- Worker Participation
- Hazard Identification & Assessment
- Hazard Prevention & Control
- Education & Training
- Program Evaluation & Improvement
- Communication & Coordination for Host Employers, Contractors, and Staffing Agencies

These core elements are broken up into manageable sections. Completion of each section will identify in which of the incremental steps the participant falls under: Introductory, Intermediate, or Advanced. Participants are solely responsible for the development and implementation of their Safety and Health Program (SHP). However, a Special Government Employee (SGE) can be requested to assist with any questions or guidance in achieving the next required step. Participants are required to go through Orientation Training and report progress regularly.

Once the Advanced step has been met, by implementing all core elements and showing a continuous effort in maintaining safety and health, the worksite will be recognized on OSHA's website, will receive a Letter of Recognition signed by the Assistant Secretary, and be able to use an SCP Logo for personal items.

"By providing employers with these resources, we are putting American workers first and keeping them

healthy and safe on the job," stated Secretary of Labor, Lori Chavez-DeRemer, at the program launch.

The SCP is open to public and private sector worksites of any size.

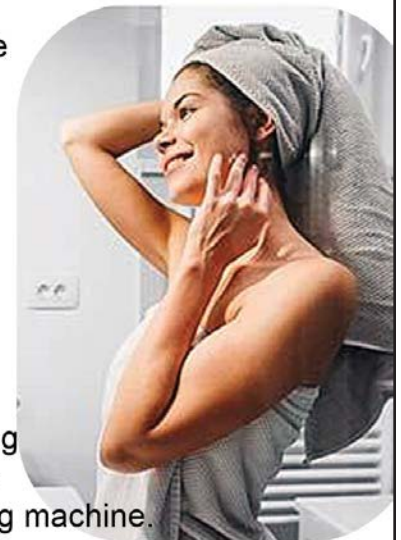
With extreme importance of safety within the propane industry, this program may help your company lessen the potential risks, injuries, or even fatalities. For more information on the program and how to begin the process, you can go to www.OSHA.gov/Safety-Champions.

Questions? Please contact NPGA's Director of Ace Services & External Relations, Andrea Pavon, Apavon@npga.org.



Rinnai **Tankless Water Heating** **Living a Tankless Life**

Your customers deserve hot water when they want it, where they want it, and for as long as they want it. With a Rinnai tankless, your customers never need to worry about running out of hot water again, even when there are multiple showers running simultaneously with the dishwasher and washing machine.



Efficiency and Peace of Mind



800.448.9504
bergquistinc.com
Bergquist Storefront 24/7

ICYMI in “The Bobtail”-Residential Heating Marketplace: Louisiana

Residential space heating is the most important end-use application for the propane industry. The residential sector itself represented 53 percent of gallons sold in 2024. And space heating is the most energy-intensive application in a typical American home.

Given its importance, NPGA has created a new data visualization tool dedicated to providing more information on the residential thermal marketplace, with data available for each state, county, zip code, and tribal nation across the country. The tool provides information on the aggregate number of propane space heating customers, propane’s market share compared to other thermal fuels, and allows for year-over-year marketplace analysis, among other capabilities. The space heating market tool is accessible to NPGA members via the Member Dashboard.

Highlights from Louisiana’s Residential Space Heating Sector:

- 35,332 households use propane for primary space heating
- Propane’s residential space heating market share: 2%
- County with the highest propane market share: Catahoula Parish (19%)
- Biggest delivered fuel competitor to propane: Wood (.4% market share)
- Dominant statewide space heating source: Electricity (64% market share)

For more information, contact NPGA’s Senior Director of State Advocacy & Affairs, Jacob Peterson, at jpeterson@npga.org.



March Safety Tips of the Week from PERC

•Performing Pre- and Post-Trip Vehicle Inspections: Conduct your pre- and post-trip inspections the same way every day. Record any deficiencies or defects on the DVIR. Any issue should be addressed immediately.

•Safe Driving Practices: Safe driving practices are a must for propane delivery drivers. Since your vehicle is larger and heavier than most other on-road vehicles - and you have a higher center of gravity - you need to know how to maintain vehicle control; drive safely; and manage accidents, breakdowns, or emergencies quickly.

•Selecting Safe Delivery Routes and Protecting Property: Drive with caution and vigilance and be prepared for any detours due to local restrictions. You will encounter a variety of issues and obstacles in day-to-day deliveries and service. Understand the size and restrictions of your vehicle, and always exercise good judgment.

•Handling Vehicle Accidents and Emergencies: Accidents and emergencies that involve propane vehicles are particularly hazardous because of the chance of a propane leak or fire. Hazards can also

arise from fitting problems, overfilled containers, or transportation issues and may be detected enroute. It is critical that propane drivers are prepared to handle these situations in an efficient and safe manner.

•Entering and Exiting the Truck: When entering and exiting a truck, keep three points of contact. Put two hands and one foot or one hand and two feet on the vehicle at all times. This is called the “three-point rule.”



propane
ENERGY FOR EVERYONE

Training Season

Ensure Safety and Compliance with New Propane Refresher Training

In the fast-paced world of propane professionals, staying current with the latest technology, regulations, and safety procedures is paramount. Refresher training is not just a regulatory requirement; it's a vital component of a robust safety program. PERC has recently introduced updated refresher training programs designed to empower employees with the skills and knowledge they need to excel in their roles.

Why Refresher Training Matters

Refresher training serves several critical purposes:

- **Compliance:** It fulfills the requirements mandated by NFPA 58, ensuring your organization remains in compliance with industry standards.
- **Knowledge Updates:** It provides a platform to educate professionals on new technologies, evolving regulations, and the latest safety protocols.
- **Skill Reinforcement:** It reinforces initial training and helps professionals stay sharp in their daily operations.
- **Enhanced Engagement:** New, interactive training programs use real-life scenarios to improve retention and engagement, making the learning process more effective.

Scalable and Flexible Training Solutions

The new refresher training programs are designed to be scalable, meeting the needs of both year-round and seasonal staff. Whether you're a full-time employee or a seasonal worker, these programs provide a convenient and accessible way to stay informed and skilled.

Regardless of your initial training source, the PERC refresher training can be used to fulfill NFPA 58 requirements. This flexibility allows organizations to integrate these programs into their existing safety protocols seamlessly.

Get Started Today

The new refresher training programs are available now and can be completed at your own pace on a computer or phone via The Learning Center. Whether you're planning the upcoming training season or looking to refresh your skills today, these programs offer a valuable resource for the industry.

For more information and to access the training, visit training.propane.com.



Everything You Need for a Strong Training Season

A successful training season starts with the right resources. That's why we provide propane marketers free access to industry-leading safety and training tools designed to support teams across your operation, from drivers and technicians to office and sales staff.

With programs like PERC Education Program (PEP) courses, refresher training, and the *Every Day Safe* program, your workforce stays prepared to work safely, confidently, and professionally — helping build consistency and a strong safety culture season after season.

Access these resources at training.propane.com

