



January 2026

# E-Newsletter

## 2026 Members

### DEALER MEMBERS

AmeriGas Propane LP  
Blossman Gas, Inc.  
Cajun Propane  
Ferrellgas  
Harrell Gas, Inc.  
Herring Gas Co. Inc. of LA  
Jim's South Butane Propane  
Lacox, Inc.  
Lake Arthur Butane Co.  
Lampton-Love Gas Co.  
Lassalle Gas Co. Inc.  
Metro Lift Propane  
National Welding Supply Co.  
Neill Gas Inc.  
O'Nealgas  
Pinnacle Propane  
Reedgas Propane Co.  
Sabine Country Butane Gas  
Scott Petroleum

### ASSOCIATE MEMBERS

Bergquist, Inc.  
Bevolo Gas & Electric Lights  
CUI  
Dealers LP Equipment  
Enterprise Products  
Gas Equipment Co., Inc.  
Hercules Transport Inc.  
L.E. Klein Co., Inc.  
Lin's Propane Trucks  
Martin Gas Sales  
Meeder Equipment Company  
Midstream Transportation Co. LLC  
Mississippi Tank Company  
NGL Supply  
P3 Propane/GeneratioNext Propane  
Pros/Consumer Focus Marketing  
Quality Steel  
Rego Products

## Laissez Les Bons Temps Rouler!

“Oui, cher!” or “Yes, dear/friend” is often a good response to the Louisiana French saying “Let the good times roll!”

It may be the end of January, but it didn't take long for the winter party to get rolling! All of our state and much of the U.S. have experienced the effects of ice and winter storms in recent days and weeks. While our industry is very thankful for the cold weather, we know with it comes issues that are out of our control like power outages, street closures, down cellular lines and more. Please remember to take extra precautions when winter storms are headed your way and above all stay safe!

2026 LPGA membership dues and information have been sent out. All current members and recent non-members should have received the information. If someone you know would like to be a member or you feel like they should consider becoming a member, please help us out and pass along the information to them. We are happy to assist in any way that we can to facilitate memberships. Please make every effort to turn your dues in as soon as possible so there is no lapse in benefits for your company. If you are missing information or have any questions regarding membership, please let us know. We appreciate each and every one of you!

As always, if you have any questions or need any information regarding the association, please contact the LPGA office at 225-763-8922 or email our Executive Director Randy Hayden at [randy@ccilouisiana.com](mailto:randy@ccilouisiana.com).

Give us a call...  
Your Meeder Equipment Company Representative  
in Louisiana is:

**Joe Ezernack**   

Cel. (903) 530-6954 • [joez@meeder.com](mailto:joez@meeder.com) • [www.meeder.com](http://www.meeder.com)

Tarantin Industries, Inc.  
Targa Resources  
Terravest Industries

**The LPGA membership list will be updated as we receive dues information. In February, this list will reflect actual membership status. Please get your 2026 membership dues in as soon as possible. If you have any questions or need membership information, please reach out to the LPGA office. Thank you to those members who have already paid and turned in dues for 2026.**

## 2026 Calendar of Events

**February 15:** NPGF Scholarship Applications Close.

**February 25-26:** National Propane & Education Training Conference, Embassy Suites-Fort Lauderdale, FL.

**March 2026:** First Quarter Board of Directors Meeting-Date and Location TBD.

**April 16-21:** Southeastern Convention & International Propane Expo, Music City Center-Nashville, TN.

**June 7-9:** NPGA Propane Days, Hilton Washington, DC-Capitol Hill.

**June 29-July 2:** APGA/LPGA Annual Summer Convention, Hilton Hotel-Pensacola Beach, FL.

**June 30:** Second Quarter Board of Directors Meeting, Hilton Hotel-Pensacola Beach, FL.

**September 2026:** Third Quarter Board of Directors Meeting-Date and Location TBD.

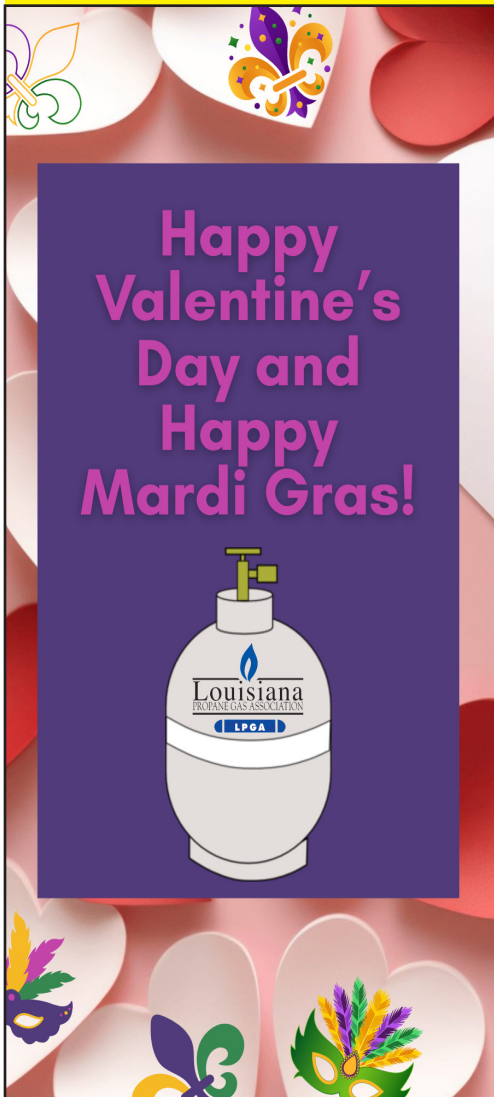
**December 2026:** Fourth Quarter Board of Directors Meeting-Date and Location TBD.

## NPGF Scholarships Close Feb. 15

The National Propane Gas Foundation 2026-2027 scholarship application is now open. The deadline is February 15. Share this flyer with your employees to help spread the word about this exclusive opportunity. To be eligible to apply, students must be:

- The dependent child of a full-time employee at a National Propane Gas Association (NPGA) or state association member company, or the Propane Education & Research Council (PERC);
- A high school senior with a 2026 graduation date or a current undergraduate student with a grade point average of at least 2.6; and
- Attending an institution of higher education on a full-time basis in the 2026-2027 academic year.

Visit the NPGF Scholarship website [here](https://www.npga.org) to learn more about the program including the full eligibility criteria. Students may apply starting on December 15. We look forward to meeting a new round of applicants! Questions? Contact NPGA Senior Manager, NPGF Scholarship Program Maril Olson at [Molson@npga.org](mailto:Molson@npga.org).



# Expo Keynote Speaker is US Navy Veteran Mary Kelly

NPGA is excited to welcome Dr. Mary Kelly to the 2026 NPGA Southeastern & International Propane Expo™ as our keynote speaker.

Mary is the CEO of Productive Leaders, a firm dedicated to leadership and economic development. After graduating from the United States Naval Academy, Mary spent 21 years on active duty in the Navy, mostly in Asia, as an intelligence officer.

She is the author of 18 books on business growth, leadership, and today's economy. As a business advisor, Mary has worked with hundreds of organizations and companies across the globe. She is currently listed as one of today's most influential economists and business strategists, and is named as one of the Top 50 Motivational Speakers in the world. Mary is also one of only 150 people named to the Speakers' Hall of Fame. As a high-energy keynote speaker, Mary focuses on using data, and research, laughter, and experience to help professionals excel. Don't miss this engaging event on Sunday, April 19 at 3:00 PM!

Register today for the 2026 Expo, the propane industry's premier annual event bringing together thousands of marketers and suppliers from across the United States and beyond for education and networking. This year we're back in Nashville, Tennessee at the Music City Center, Sunday, April 19 – Tuesday, April 21.

Register by February 14 to take advantage of Early Bird prices and you'll pay the lowest rates all year. NPGA offers Full Conference & Expo registration packages or Exhibit Hall Only options for all member types. Please note that Exhibit Hall Only does not include the Welcome Reception on Sunday.

Book your accommodations only through EventSphere, the official housing provider for the 2026 Expo. EventSphere's "PassKey" technology lets you search hotel availability, compare rates, and reserve in one convenient location. Once booked, you can quickly and efficiently manage your reservation online. Click or call 1-866-446-3551 (Monday - Friday: 9:00 am - 5:00 pm EST). **The NPGA room block is available until March 18.** Book early for the best selection!



## LCR.iQ™ METER REGISTER AND DATA CONTROLLER



- HIGH-RESOLUTION HD DISPLAY
- LARGE DIGITS FOR EASY VIEWING
- CONFIGURABLE FUELING DATA
- SMART KEYS FOR GUIDED OPERATION
- LARGE KEYS FOR EASY OPERATION
- PANEL MOUNT ENCLOSURE OPTION
- METER MOUNT BASE



**Atlanta GA**  
(800) 241-4155

**Houston TX**  
(800) 334-7816

**Little Rock AR**  
(800) 643-8222

**Chandler OK**  
(800) 763-0953

**Indianapolis IN**  
(800) 241-1971

**Richmond VA**  
(800) 368-4013

**Dallas TX**  
(800) 821-1829

**St. Louis MO**  
(800) 423-4685

**Fayetteville NC**  
(800) 447-1625

**Kansas City MO**  
(800) 821-5062

**Sebring FL**  
(800) 821-0631



Tracy Wells

[www.gasequipment.com](http://www.gasequipment.com)

# Every Day Safe Program

Building a safety culture isn't about a single training session or a manual on a shelf; it's a commitment to the well-being of every employee and the families they return to each night. To support this mission, the Propane Education & Research Council (PERC) has launched the Every Day Safe Program.

This initiative is designed specifically for propane marketers to strengthen their safety culture through manageable, consistent steps: one habit, one goal, and one day at a time.

## Assess: Know Your Starting Point

The journey begins with an internal deep dive. Leadership is encouraged to evaluate current safety practices, policies, procedures, and training. By identifying gaps or areas for improvement today, companies can build a more resilient foundation for tomorrow.

## Set Goals: Mapping the Future

Once the assessment is complete, the program guides managers in setting clear, actionable milestones for the next six months, one year, and three years.

These evaluations and touchpoints are for internal company use only. PERC does not collect or store this data, ensuring that your company's internal reviews remain private.

## Take Action: Resources and Engagement

The "Action" phase is where the culture truly takes root. The program provides a wealth of resources to keep safety top-of-mind:

- **The Learning Center:** Access to specialized training on safe driving, workplace safety, delivery best practices, consumer safety, and more.
- **Monthly Webinars:** 30-minute sessions featuring external safety subject matter experts to provide fresh perspectives.
- **Real-World Steps:** Engage with the community through fire department visits, hold weekly safety meetings, and participate in industry celebrations like National Truck Driver Appreciation Week.

## Strengthening the Industry Together

When one company improves its safety habits, the entire propane industry becomes stronger and more reputable. By enrolling in the Every Day Safe Program, you are choosing to make safety an active, everyday priority for your co-workers, your customers, and the communities you serve.

Ready to take the next step? Visit [propane.com/EveryDaySafe](http://propane.com/EveryDaySafe) to enroll your company and begin building a safer future.



## Give Your Customers an Advantage with Propane Power Generation

Propane providers can deliver proven power solutions — including CHP systems, prime and backup generation, and EV charging — giving customers new ways to meet performance and efficiency needs that set their businesses apart.

Through PERC's Alternative Technology Demonstration & Research Program, customers may also qualify for financial compensation by sharing performance data from propane-powered CHP and cooling systems. It's a powerful opportunity to drive savings, insights, and innovation.

► Learn more at [propane.com/alttech](http://propane.com/alttech)



# NPGA Introduces New Mutual Aid Agreement Resource

NPGA has released a new Sample Mutual Aid Agreement to help member companies prepare for and respond to emergencies, natural disasters, and other operational disruptions.

The agreement is designed as a voluntary, business-to-business framework that allows propane companies to assist one another when internal resources are exceeded while maintaining clear expectations around safety, liability, reimbursement, and customer protection.

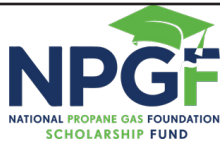
NPGA developed the sample agreement in response to increasing interest from members seeking a more formalized and proactive approach to mutual aid. The resource provides a structured starting point that companies can customize to meet their specific needs, in consultation with their own legal counsel.

Key elements of the agreement include:

- Clear definitions of roles, employee status, and operational control

- Expense reimbursement and insurance requirements
- Liability and indemnification provisions
- Customer non-solicitation protections

The Sample Mutual Aid Agreement is now available on the member dashboard under the Supply & Logistics tab.



## National Propane Gas Foundation Scholarships



The National Propane Gas Foundation (NPGF) Scholarship Fund awards \$1,000 and \$2,000 scholarships to students pursuing any course of study at two- and four-year colleges or technical, trade, or vocational schools. Students pursuing propane-related careers are especially encouraged to apply. Eligible applicants are children of employees of NPGA member companies, state propane associations, or PERC.

Since 1994, the NPGF Scholarship Fund has awarded more than \$2.7 million in scholarships to 1800+ children of NPGA member company employees!

### Key Dates

**December 15, 2025**  
Application window opens

**February 15, 2026**  
Application deadline

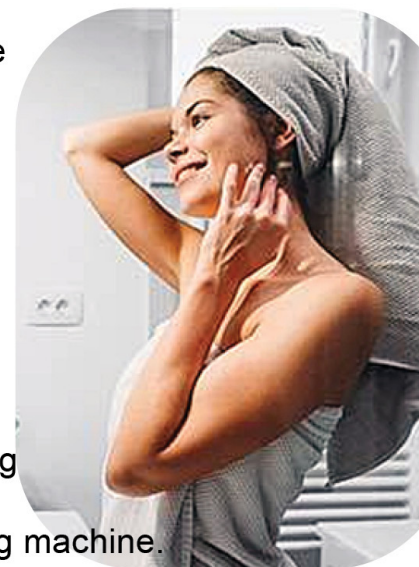
Learn more and apply, read about past scholarship recipients, and see a list of our generous donors and sponsors at [www.npga.org/news-resources/scholarships](http://www.npga.org/news-resources/scholarships)

Questions?

Contact us at [scholarship@npga.org](mailto:scholarship@npga.org)

## Rinnai Tankless Water Heating Living a Tankless Life

Your customers deserve hot water when they want it, where they want it, and for as long as they want it. With a Rinnai tankless, your customers never need to worry about running out of hot water again, even when there are multiple showers running simultaneously with the dishwasher and washing machine.



*Efficiency and Peace of Mind*



800.448.9504  
[bergquistinc.com](http://bergquistinc.com)  
Bergquist Storefront 24/7

# State GHG 2050 Emission Targets

Almost half of all states have either a statutory mandate or executive order to reduce greenhouse gas (GHG) emissions, including requirements that grid electricity be carbon-free and economy-wide GHG emissions be net-zero by 2050. While legislators and governors have no issues creating these lofty targets, especially since many won't be in office to oversee the painful implementation of programs that affect the availability and cost of energy products, with 25 years (or less) left to achieve these ambitious goals, it's clear that making a promise is one thing, delivering on it is quite another.

## Examples of State GHG Emission Reduction Targets

- California: Net-zero GHG emissions by 2045
  - Percentage of in-state electricity generated from fossil fuels: 40.4%
- Colorado: Net-zero GHG emissions by 2050
  - Percentage of in-state electricity generated from fossil fuels: 58.5%
- Louisiana: Net-zero GHG emissions by 2050
  - Percentage of in-state electricity generated from fossil fuels: 79.2%
- Maryland: Net-zero GHG emissions by 2045
  - Percentage of in-state electricity generated from fossil fuels: 46.6%
- Massachusetts: Net-zero GHG emissions by 2050
  - Percentage of in-state electricity generated from fossil fuels: 78.2%
- Minnesota: 100% carbon-free electricity by 2040
  - Percentage of in-state electricity generated from fossil fuels: 46.6%
- New Mexico: 100% carbon-free electricity by 2045
  - Percentage of in-state electricity generated from fossil fuels: 50.5%
- North Carolina: Carbon neutrality in electricity sector by 2050
  - Percentage of in-state electricity generated from fossil fuels: 53.8%
- Rhode Island: 100% renewable electricity by 2033
  - Percentage of in-state electricity generated from fossil fuels: 89.9%

- Washington State: 100% carbon-free electricity by 2045

◦Percentage of in-state electricity generated from fossil fuels: 20.3%

Collectively, across these 10 states, fossil fuels produce an average of 56.4% of grid electricity. In contrast to the bulk electric grid, the direct-use of propane remains a clean and very efficient way to consume energy, especially from energy-intensive building applications such as space and water heating.

For more information, contact NPGA's Senior Director of State Advocacy & Affairs, Jacob Peterson at [jpeterson@npga.org](mailto:jpeterson@npga.org).

---

---

## January Safety Tips of the Week from PERC

- Using PPE: Personal Protective Equipment (PPE) plays an important role in ensuring your safety when handling propane. If you are unsure of what PPE to use or how to use it, ask your Supervisor.
- Using and Maintaining Fire Extinguishers: Fire extinguishers must be available at all facilities and on all vehicles. They are vital for fighting small fires and for creating escape routes. It is important that effected employees understand how to maintain and use fire extinguishers, in the event of a safety-related issue.
- Basic Fire Prevention Rules and Procedures: Never turn on or off any electrical switch in the area of a propane discharge. If power must be turned off to avoid a fire, turn it off from the circuit breaker in another location not affected by the discharge.
- Personal Risk Assessment: To ensure the safety of you and those around you, it is essential that you perform a personal risk assessment before starting any task. This will help you determine what precautions you need to take and prevent possible accidents or injuries.





*JEFF LANDRY*  
GOVERNOR

*COLONEL ROBERT P. HODGES*  
DEPUTY SECRETARY

**State of Louisiana**  
*Department of Public Safety and Corrections*  
*Public Safety Services*

January 21, 2026

Pursuant to Title 49, Code of Federal Regulations (CFR), Part 390.23 and LA R.S. 32:1504 and/or LA R.S. 32:1711 ET SEQ., or regulation(s) adopted pursuant to LA R.S. 32:1714; Colonel Robert P. Hodges, Superintendent Louisiana State Police and Deputy Secretary Department of Public Safety, has declared a that a regional emergency exists which justifies exemptions from Parts 390 through 399 of Title 49 (Federal Motor Carrier Safety Regulations). Such an emergency declaration is in response to the major winter storm prediction for the State of Louisiana.

The declaration of this emergency provides relief from Title 49, CFR, Part 395.3 and 395.5 of the Federal Motor Carrier Safety Regulations for motor carriers in Louisiana providing direct assistance to the disaster relief in the State of Louisiana. This includes, but is not limited to, power grid repairs, delivery of groceries, fuel, and other essential products. This declaration also provides relief from Title 49, CFR, Parts 390 through 399 for motor carriers providing residential heating fuel in areas directly affected. This includes heating oil, natural gas, and propane.

Nothing contained herein shall be construed as an exemption from the Controlled Substances and Alcohol Use and Testing Requirements of Title 49, CFR, Parts 40 and 382; Commercial Drivers License requirements of Title 49, CFR, Part 383; the Financial Responsibility requirements in Title 49, CFR, Part 387 and the Hazardous Material Transportation Regulations of Title 49, CFR, Parts 107 (Subpart G), 171, 172, 173, 177, 178, and 180; or the applicable State of Louisiana size, weight, or traffic safety regulations.

Motor carriers that have an Out-of-Service Order in effect cannot take advantage of the relief from the regulations that this declaration provides under Title 49, CFR, Part 390.23.

Consistent with Title 49, CFR, Part 390.23, the emergency declaration will take effect at 12:01 a.m., January 23, 2026, and will remain in effect for the duration of the emergency (as defined in Title 49, CFR, Part 390.5), ending at 11:59 p.m., February 05, 2026, whichever is less. The residential heating fuel exemption shall expire on the 30th day following the initial declaration.

Colonel Robert P. Hodges  
Superintendent, Louisiana State Police  
Deputy Secretary, Department of Public Safety

*COURTESY • LOYALTY • SERVICE*  
*"An Equal Opportunity Employer"*  
P.O. BOX 66614, BATON ROUGE, LOUISIANA 70896



*JEFF LANDRY*  
GOVERNOR

*COLONEL ROBERT P. HODGES*  
DEPUTY SECRETARY

*State of Louisiana*  
*Department of Public Safety and Corrections*  
*Public Safety Services*

To: All Louisiana Dealers

From: Don Robin, Director  
Liquefied Petroleum Gas Commission

In accordance with LAC 55:XI.301, I have been delegated emergency powers by the Liquefied Petroleum Gas Commission. These emergency powers shall be in effect until the conclusion of the January, 2026, emergency.

In order to help facilitate delivery of gas to residential and commercial customers, I am enacting the following emergency policies:

1. All dealers and service providers may pressure test/leak test any residential or commercial system, including those for out-of-gas and service interruptions. All dealers and service providers may fill other companies' tanks.
2. Delivery of gas can be made to any on-site container that is out of gas or where service was interrupted, without a pressure test/leak test, if no test can be provided at the time of delivery. Dealers and suppliers must follow LAC 55:XI.167. The dealer/supplier may turn on the container service valve upon the customer's request. The customer shall assume liability for the system until such pressure test/leak test can be performed.
3. All LP bobtail and transport trucks without the required truck tag may be used as long as the vehicle is mechanically sound and meets all safety requirements.
4. All LP driver and service examination requirements will be waived for out of state personnel so long as they have passed an equivalent exam in another state.
5. Permit requirements for dealers are waived as long as the dealer is in compliance with their state of origin.

Don Robin

---

Don Robin, Director  
Liquefied Petroleum Gas Commission

*COURTESY • LOYALTY • SERVICE*  
*"An Equal Opportunity Employer"*  
*P.O. BOX 66614, BATON ROUGE, LOUISIANA 70896*