



2025 Members

DEALER MEMBERS

AmeriGas Propane LP
Blossman Gas, Inc.
Cajun Propane
Ferrellgas
Harrell Gas, Inc.
Herring Gas Co. Inc. of LA
Jim's South Butane Propane
Lacox, Inc.
Lake Arthur Butane Co.
Lampton-Love Gas Co.
Lassalle Gas Co. Inc.
Metro Lift Propane
National Welding Supply Co.
Neill Gas Inc.
O'Nealgas
Pinnacle Propane
Reedgas Propane Co.
Sabine Country Butane Gas
Scott Petroleum

ASSOCIATE MEMBERS

All Propane Parts & Equipment
Bergqu, Inc.
Bevolo Gas & Electric Lights
CUI
Dealers LP Equipment
Enterprise Products
Gas Equipment Co., Inc.
Hercules Transport Inc.
L.E. Klein Co., Inc.
Martin Gas Sales
Meeder Equipment Company
Midstream Transportation Co. LLC
Mississippi Tank Company
NGL Supply
P3 Propane/GeneratioNext Propane
Pros/Consumer Focus Marketing
Quality Steel
Rego Products
Tarantin Industries, Inc.

March 2025

E-Newsletter

Spring Forward!

The clocks have moved forward, and the temps are rising which means spring is here! We are officially past the Spring equinox which was March 20. Any cooler weather we get between now and June are luck of the draw. Enjoy it while it lasts because we won't have to wait for June for summer weather to start in the south!

The 2025 APGA/LPGA Summer Convention room block and registration are officially open! Please make plans to join us at the Perdido Beach Resort in Orange Beach, AL June 29-July 1. You should have received an email with detailed information and links. You can also find the full brochure at the end of this month's newsletter.

The survey window for PERC's 2024 retail propane sales report is open now through May 15. Each year, PERC asks retailers to submit information for the report. This information is vital to helping PERC and the industry understand market trends across the propane industry and the evolving needs of individual retailers.

In preparation for the survey, please make sure you have the appropriate contact information on file with PERC. If you are unsure whether your info is correct, please email salesreport@propane.com. Start your report here.

As always, if you have any questions or need any information regarding the association, please contact the LPGA office at 225-763-8922 or email our Executive Director Randy Hayden at randy@ccilouisiana.com.

Give us a call...
Your Meeder Equipment Company Representative
in Louisiana is:

Joe Ezernack   

Cel. (903) 530-6954 • joez@meeder.com • www.meeder.com

Targa Resources

Terravest Industries

AFFILIATE MEMBERS

Baker Texaco

Bayou Outdoor Supercenter

Best Stop #3

Best Stop #19

Bronco Stop

Canal Discount Mart Inc.

Cenla RV Center

Chris' Specialty Foods

Da Bait Shop LLC

Dean Food Mart

Depot II, Inc.

Doiron's Landing, LLC

Earl's Cajun Market LLC

Fontaine Lumber Co, Inc.

Fremin's Food & Furniture

Fuel Express Mart

Golson Enyerprises LLC

Guidry's Food Store Inc.

HRM Inc./Maxi Mart

K & G on the Geaux

Kornbread Korner

LA 88 Discount Food Mart

Lagneaux's Country Store

Land-O-Pines Family Campground

Livonia Lumber & Farm Supplies

Macro Companies Inc.

Nash Express

Paul's Grocery of Eva, LLC

Paul's Meat Market & Grocery LLC

Petals Inc.

Petro Plus

Philip Food Mart, LLC

Popingo's Convenience Stores LLC

Raceway 728

Railside Feed & Supply LLC

Riche's Y-Not Stop

River's Fresh Market

RP Custom Trailers & Service

Rockery Ace Hardware

Safe & Sound Storage

Sagona's Hardware & Sporting Goods

Savanne Mini Mart

Southend Country Mart Inc.

Speedy Mac's

Sunshine III LLC

The Fruit Stand, Inc.

The Robberson Thib's

Tickfaw Pit Stop

Vidrine & Vidrine LLC

Warm Thoughts Communications

Whitehall Mall LLC

Wilderness Acres

Xtreme Hardware

2025 Calendar of Events

April 4-6: Southeastern Propane Expo, Charlotte Convention Center-North Carolina.

June 8-10: NPGA Propane Days, Hilton Washington DC Capitol Hill.

June 29-July 1: APGA-LPGA Annual Summer Convention, Perdido Beach Resort-Orange Beach, Alabama.

June 30: Second Quarter Board of Directors Meeting, Perdido Beach Resort-Orange Beach, AL.

September 2025: Third Quarter Board of Directors Meeting, Date and Location TBD.

November 6-7: Leadership Summit, Dupont Circle Hotel-Washington, DC.

December 2025: Fourth Quarter Board of Directors Meeting, Date and Location TBD.

New Member Resource Available: State Training and Business Operational Requirements

While the propane industry is highly regulated at the state level, industry regulations, business requirements, and licensing standards vary drastically from state-to-state. To help propane marketers better understand his complex web of regulations and requirements, we are excited to provide members with a 50-state survey of the following issues that affect the propane industry:

1. Training and licensing requirements to install gas piping and appliances;
2. Training and licensing requirements for propane industry personnel (e.g., bobtail driver, service technician);
3. Legal requirements to operate a propane business;
4. Requirements / prohibitions on sales only by weight, liquid measure, or vapor measure whereas selling by the "fill" is not permitted.

To access the survey, visit the My State section of NPGA's website. For more information, contact NPGA's Senior Director of State Affairs, Jacob Peterson at jpeterson@npga.org.

Behind The Scenes: Powering Ports

The Vital Role of Stevedores and Their Equipment

Stevedores play a crucial role in keeping port operations running smoothly, from managing logistics to using special equipment for loading and unloading cargo containers safely and quickly. These port professionals work closely with port authorities, shipping companies, and logistics firms to keep goods flowing seamlessly through supply chains.

The use of propane-powered equipment enhances the essential processes at port operations by optimizing efficiency, reducing emissions, and lowering costs—making it a sustainable and effective solution for material handling in ports.

A Day in the Life of a Stevedore

A stevedore's work begins long before a ship docks at port. Coordination between terminal operators, shipping companies, and stevedoring professionals must all work together to ensure cargo operations run smoothly. And once a shipping vessel arrives, they must be ready to spring into action.

Stevedores work in long shifts around the clock to unload containers, breakbulk, and heavy cargo loads. Depending on the infrastructure and agreements each specific port operation has with its shipping lines, stevedores will either operate their own equipment or utilize on-site equipment provided by the port. In order to ensure smooth transitions and minimal downtime, it's critical that stevedores understand proper cargo handling techniques, safety procedures, and efficient use of this material handling equipment for success.

The Line of Equipment Used by Stevedores

While exact types of equipment needed depends on the specific task at-hand and size of cargo, a variety of heavy equipment is necessary to complete the list of tasks performed by stevedores. Generally, this includes the following pieces of heavy machinery:

- Forklifts, which are used to transport goods and supplies in pallets or small containers around the terminal.
- Container Handlers, which are essential for transferring both full and empty shipping containers within the port.

- Cranes, which are used to hoist heavy cargo from ship to shore or around the terminal.

- Straddle Carriers, which transport containers over shorter distances within a port yard.

- Port Tractors, which are also known as "terminal tractors", "shag trucks", "shunt trucks", "yard trucks", or even "yard goats," are the ultimate workhorse for moving cargo containers at both seaports and inland ports.

Why Propane-Powered Equipment is Preferred by Stevedores

The choice of fuel for material handling equipment is a significant decision for port operations. Propane-powered equipment has gained traction in recent years for several reasons:

- **Reduced Emissions:** Propane burns cleaner than diesel, producing significantly lower greenhouse gas emissions. This is crucial for ports aiming to meet environmental regulations while maintaining efficiency.

- **Operational Efficiency:** Propane-powered forklifts and terminal tractors offer comparable, if not superior, performance to their diesel counterparts. They provide consistent power and don't require extensive downtime for refueling.

- **Lower Maintenance Costs:** Compared to diesel engines, propane engines tend to have fewer maintenance requirements due to cleaner combustion and reduced carbon buildup.

- **Availability and Cost-Effectiveness:** Propane is often more affordable than diesel and gasoline, and its supply is stable, making it a cost-effective choice for material handling.

Industry leaders in material handling and logistics have increasingly acknowledged the role of propane in port operations. Moreover, regulatory bodies such as the Environmental Protection Agency (EPA) have recognized propane as a viable alternative fuel, providing incentives for ports to transition from diesel-powered fleets.

The Future of Stevedoring and Material Handling Equipment

With increasing global trade volumes, the demand for efficient cargo handling at ports is will escalate as well. Stevedores will continue to play a crucial role in optimizing port operations nationwide, and their reliance on advanced material handling equipment will only increase with the heightened demand.

The industry is already seeing innovations in propane-powered equipment, such as hybrid propane-electric forklifts and automated guided vehicles (AGVs) powered by propane. These advancements promise to enhance efficiency while maintaining the environmental benefits of propane, and are just one of many ways the propane industry is creating equipment now with consideration for the future.

With a shift towards propane-powered material handling equipment, stevedores can achieve greater operational efficiency while reducing their environmental footprint. As technology continues to evolve, propane will remain a key fuel source in the material handling sector, driving productivity and sustainability in ports across the country.

Learn more about how propane is helping improve the experience of port operations both for port workers and the surrounding communities, by visiting <https://propane.com/for-my-business/material-handling-for-ports/>.



LCR.iQ™ METER REGISTER AND DATA CONTROLLER



- HIGH-RESOLUTION HD DISPLAY
- LARGE DIGITS FOR EASY VIEWING
- CONFIGURABLE FUELING DATA
- SMART KEYS FOR GUIDED OPERATION
- LARGE KEYS FOR EASY OPERATION
- PANEL MOUNT ENCLOSURE OPTION
- METER MOUNT BASE



Atlanta GA
(800) 241-4155

Houston TX
(800) 334-7816

Little Rock AR
(800) 643-8222

Chandler OK
(800) 763-0953

Indianapolis IN
(800) 241-1971

Richmond VA
(800) 368-4013

Dallas TX
(800) 821-1829

St. Louis MO
(800) 423-4685

Fayetteville NC
(800) 447-1625

Kansas City MO
(800) 821-5062

Sebring FL
(800) 821-0631

www.gasequipment.com



Tracy Wells

Irrigation Engines, Displacement of Diesel, Competing with Electric, March 2025

Across the U.S., thousands of farmers are benefitting from irrigating with propane-powered engines—and there's significant opportunity to help even more farmers make the switch. Propane gives farmers greater control over their irrigation, ensuring they can protect their crops whenever necessary, especially during critical periods or power outages. With fuel savings of up to 45 percent, propane engines deliver exceptional efficiency, reliability, and cost-effectiveness, outperforming both diesel and electric alternatives.

But how can farmers replace their old diesel irrigation engines? If you have customers using old diesel irrigation engines, converting those engines to propane is a win-win-win. Your customer wins by having a more cost-efficient engine to operate, resulting in a better ROI on the crop. The local community wins by having a clean engine running the water pump, resulting in better local air quality. And you, the propane marketer, will win by providing more gallons and a much-needed service to customers using propane powered irrigation systems.

Propane powered irrigation systems are also winning against electricity. The days of cheap electricity in rural parts of the country are gone. With electric rates on the rise, propane powered irrigation engines are the winning solution no matter the geography. As a marketer, these gallons are off season and consistent once farmers decide to turn the irrigation system on.

The average system can burn six to ten gallons of propane per hour of operation. Most systems average between 1,000 and 4,000 hours of operation annually, depending on where they are located in the country and the type of crop. If you would like to explore more on winning with propane powered irrigation, head to propane.com and utilize the Irrigation Cost Calculator to demonstrate the savings of propane irrigation to your customers.

And remember the Propane Farm Research Program. This program compensates farmers for their real-life experience with new propane powered irrigation engines and other eligible equipment.

Visit propane.com/agriculture for more information on how propane empowers our farmers to feed the world.



March Safety Tips of the Week from PERC

***Performing Pre- and Post-Trip Vehicle Inspections:** Conduct your pre- and post-trip inspections the same way every day. Record any deficiencies or defects on the DVIR. Any issue should be addressed immediately.

***Safe Driving Practices:** Safe driving practices are a must for propane delivery drivers. Since your vehicle is larger and heavier than most other on-road vehicles - and you have a higher center of gravity - you need to know how to maintain vehicle control; drive safely; and manage accidents, breakdowns, or emergencies quickly.

***Selecting Safe Delivery Routes and Protecting Property:** Drive with caution and vigilance and be prepared for any detours due to local restrictions. You will encounter a variety of issues and obstacles in day-to-day deliveries and service. Understand the size and restrictions of your vehicle, and always exercise good judgment.

***Handling Vehicle Accidents and Emergencies:** Accidents and emergencies that involve propane vehicles are particularly hazardous because of the chance of a propane leak or fire. Hazards can also arise from fitting problems, overfilled containers, or transportation issues and may be detected enroute. It is critical that propane drivers are prepared to handle these situations in an efficient and safe manner.

***Entering and Exiting the Truck:** When entering and exiting a truck, keep three points of contact. Put two hands and one foot or one hand and two feet on the vehicle at all times. This is called the "three-point rule."



propane
ENERGY FOR EVERYONE™

Dependable Performance, Every Season

Across the U.S., thousands of farmers are benefiting from irrigating with propane-powered engines – and there’s a significant opportunity to help even more farmers make the switch. Propane gives farmers greater control over their irrigation, ensuring they can protect their crops whenever necessary – especially during critical periods or power outages. With fuel savings of up to 45 percent, propane engines deliver exceptional efficiency, reliability, and cost-effectiveness, outperforming both diesel and electric alternatives.

ENERGY FOR GROWING CROPS AND GROWING PROFITS

When powering irrigation engines, propane helps farmers increase their performance while decreasing both costs and harmful emissions.

Scan below to watch a short video that demonstrates the advantages propane brings farmers across the U.S.



2025 Propane Construction Research Program Launches, 2024 Results Unveiled

RICHMOND, Va. (March 5, 2025) – The Propane Education & Research Council (PERC) has released the results from its 2024 Propane Construction Research Program (PCRP). With nearly 2,000 projects completed across 23 states — including first-time participation from South Carolina, North Carolina, Minnesota, and Arkansas — the program continues to demonstrate propane’s contributions to creating healthier homes.

This national research program is designed to collect data from participating builders to better understand how propane is used in residential construction. As part of the program, builders complete a survey with project details about the homes they build or remodel using propane, covering topics such as consumer perception and overall challenges, and receive compensation upon completion for meeting the qualifying requirements.

Data from the 2024 program shows that builders using propane-powered systems collectively reduced an average household reduction in carbon dioxide of 35 percent. The program also found that choosing sustainability doesn’t necessarily mean higher costs, as 68 percent of builders reported that propane-powered homes cost the same or less to build than all-electric alternatives.

“Builders across the country are proving that propane can produce high-performance and energy-efficient homes while maintaining affordability,” said Bryan Cordill, director of residential business development at PERC. “Year after year, this program shows propane’s ability to reduce emissions and how it will continue to support the growing consumer demand for sustainable housing.

To date, the program has collected data from more than 5,300 homes across the country, helping to cut 40,411,000 pounds of carbon output—which is equivalent to the greenhouse gas emissions from 4,276 gasoline-powered vehicles driven for an entire year or the CO2 emissions from the energy needed to power 2,462 homes for a year. In addition to its impact on emissions and cost savings, the program is also changing the mindset of builders who previously favored all-electric.

“The PERC builder program has allowed us to work

with builders on projects where they initially were convinced that going all-electric was the best option,” said Bill Moore, sales manager at Conger LP Gas. “With the tools on the PERC website in conjunction with the PCRP benefits, builders in our area realize the value-added proposition that propane brings to the project.”

Applications for the 2025 Propane Construction Research Program are now open. To qualify, licensed U.S. builders or remodelers must be at least 18 years old and install at least two propane appliances in the home in 2025. One of these appliances must be a boiler or furnace, hydronic air handler, combi boiler, tankless or storage tank water heater, or a hybrid heat pump with propane gas emergency heat. New construction homes can receive up to \$1,000 in compensation, while remodel projects that replace a heating oil- or electric-powered appliance with a propane appliance are eligible for an additional \$500 bonus.

To apply or learn more about the Propane Construction Research Program, visit propane.com/pcrp.

###

About PERC: The Propane Education & Research Council is a nonprofit that provides leading propane safety and training programs and invests in research and development of new propane-powered technologies. PERC is operated and funded by the propane industry. For more information, visit Propane.com.



EPA Proposes Actions to Reconsider Biden-Era Rules

On March 12, 2025, the U.S. Environmental Protection Agency (EPA) Administrator Lee Zeldin announced 31 proposed actions to reconsider earlier EPA rules. The EPA has not yet initiated any formal action related to these proposals. Proposals particularly relevant to the propane industry include:

- **Reconsideration of light-duty, medium-duty, and heavy-duty vehicle rules:** The EPA will reconsider its emissions standards requirements issued by the Biden administration for light, medium, and heavy duty vehicles, as well as components of the 2021 Clean Trucks Plan, including the 2022 Heavy-Duty Nitrous Oxide rule.

- **Reconsideration of the Social Cost of Carbon:** EPA will revisit the use of the “Social Cost of Carbon,” including consideration of eliminating the calculation entirely from permitting or regulatory decisions. As we wrote in our summary of earlier Executive Orders, the Social Cost of Carbon is a methodology that only takes into consideration site emissions, not the full fuel cycle, and has been used to force a reduced usage of carbon in the

U.S. without similar reductions in countries that are designated as developing nations.

- **Reconsideration of Risk Management Program Rule:** EPA will review the Risk Management Program, (RMP) which addresses chemical accident prevention at facilities. The agency’s risk management program added planning and reporting requirements for facilities and forced some to implement new safeguards. NPGA has commented on the RMP rule in the past, specifically focusing on the retail facility exemption.

- **Plan to Work with States on SIPs to Improve Air Quality and Reconsider “Good Neighbor Plan”:** EPA will consider ending the Good Neighbor Plan for the 2015 Ozone National Ambient Air Quality Standards, issued in 2023 to address interstate transport of air pollution. The EPA posted a fact sheet describing its reasons for this proposed action on the Good Neighbor Plan website.

Questions? Contact Director of Regulatory Affairs and Associate General Counsel Kate Gaziano at kgaziano@npga.org.



Complete the 2024 Annual Retail Sales Report.

Annually PERC asks for propane retailer participation in the Annual Retail Propane Sales Report. This information is vital to helping PERC and the industry understand market trends across the propane industry and the evolving needs of individual retailers of odorized propane. It will also ensure that each state receives an accurate amount of state rebate funding from PERC to support vital local projects that impact safety, training, and growth.

▶ Submitting your report is easier than ever. Your responses will be kept confidential – go to propane.com/salesreport to get started.



8.995



Billion Gallons Sold in 2023.



Annual Paint Sale

- Save**
- 10% on Paint & Tools
 - Free Freight on 48 gallons or more
 - 5 gallon pail savings
 - Plus 2% on 200 gallons or more

Paint sale ends July 31st



Sumter Coatings™

The paint designed specifically for propane tanks, providing protection and quality appearance.

You put your company name on your tanks, Sumter Coatings will make them look their best.


Bergquist

800.448.9504 • bergquistinc.com

Storefront 24/7





**PARTY
LIKE IT'S
1776!**

**AT ALABAMA / LOUISIANA
PROPANE GAS ASSOCIATIONS'**



**2025 SUMMER
CONVENTION**



**JUNE 29 -
JULY 1,
2025**



**PERDIDO BEACH
RESORT
ORANGE BEACH, AL.**

CONVENTION INFORMATION



Get ready to party like it's 1776 at the Alabama/Louisiana Propane Gas Associations' joint Summer Convention at Perdido Beach Resort in Orange Beach, Alabama, from June 29 - July 1, 2025. This year, we're not only celebrating our industry and America's birthday but also Randy Hayden's last hoorah with us. It's a chance to strengthen connections and honor the spirit of liberty and unity that shaped our nation.

KENNY LUCERO
LPGA President

With a full schedule of seminars, meetings, and activities, this convention offers plenty of opportunities to network, learn, and have fun. Don't miss out on this historic event to celebrate freedom, knowledge, and the American spirit while making memories with Randy. Pack up, head our way, and join us for an unforgettable time! We can't wait to see you there!

BUBBA QUICK
APGA President

SUNDAY WELCOME

The convention will begin Sunday evening with a Welcome Reception, hosted by Supplier Members from both states. Enjoy light hors d'oeuvres and drinks before you're free to explore the evening, grab dinner, and reconnect with fellow members. And don't forget, the Hospitality Suite will be open for you to relax, take in the view, and share your thoughts with others!

MONDAY SEMINARS/MEETINGS

JOINT SEMINARS

- ***NPGA ISSUES OF IMPORTANCE***

STEVE KAMINSKI, NPGA PRESIDENT AND CEO

The membership will be provided with an update on issues of importance that NPGA is currently addressing for the propane industry.

- ***PERC UPDATE***

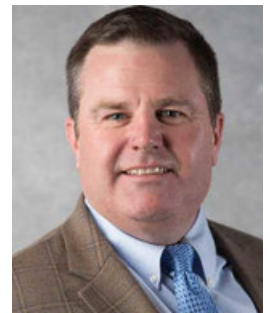
BRYAN CORDILL, DIRECTOR, RESIDENTIAL BUSINESS DEVELOPMENT

Bryan has been invited to speak on the development of residential and commercial business. He will provide members with an update on PERC's most recent programs and resource offerings.

- ***TARIFFS- NATIONAL UPDATE***

STEVE KAMINSKI, NPGA PRESIDENT AND CEO

Steve will summarize the purpose and impact of tariffs, covering key topics like their economic effects, trade relations, and potential outcomes. If time allows, he may touch on related issues like trade agreements or global economic policies.



ASSOCIATION MEETINGS

After the joint seminars, each state will hold its respective meetings separately.

Alabama: Annual General Membership/Board of Directors Meeting

Louisiana: Committee Meetings and General Membership/Board of Directors Meeting

Showcase your brand at our conference with a fun, unmanned exhibitor table! For just \$100, your display will be up throughout the event, giving attendees the chance to stop by between sessions and check out your products or services. It's low pressure, high exposure—perfect for making connections without staffing a booth. Grab this opportunity to stand out!

EXHIBITOR TABLES





MONDAY ACTIVITES



SANDBAR SUNDAE CELEBRATION

Join us Tuesday evening for the **Sandbar Sundae Celebration**—the ultimate treat for your taste buds! Indulge in a mouthwatering selection of vanilla, chocolate, and strawberry ice cream, topped with bananas, walnuts, and an assortment of candy bar pieces. Drizzle on some rich chocolate and caramel sauces, and finish it off with a fluffy dollop of whipped cream. Whether you're a fan of classic flavors or love mixing it up, this celebration promises a sweet and fun-filled experience for everyone! This event supports the David Reaves, Don Haden, and Bill Montgomery Scholarships in Alabama, and the Marie Daniel Scholarships in Louisiana.



ROAST OF RANDY HAYDEN

Get ready for the event of the year, a night hosted by Miss America Abbie Stockard – the **Roast of Randy Hayden!** You know him, you love him... or maybe you're just here for the sundae bar. Either way, you're in for a treat! After 25 years working for propane, Randy has become a staple to our industry. He has graced us with his wisdom, his unique sense of humor, and countless stories we'll never forget. The roasting will be during the ticket giveaway and silent auction, so bring your best (and most embarrassing) memories, because we're going to give Randy a send-off for the books! Get ready for laughs, gasps, and maybe a few tears (mostly from Randy).



TICKET GIVEAWAY & SILENT AUCTION

Enjoy our ticket giveaway with cash prizes and gifts—just be there when your number is called! Plus, check out the exciting items up for bid in the Silent Auction.

Ticket Giveaway:

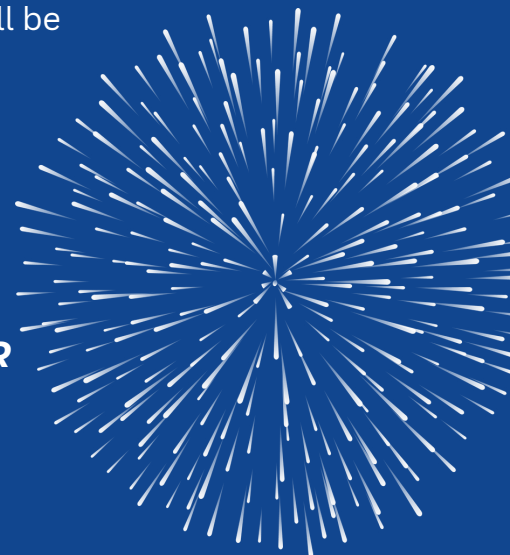
- ****All registrations include One (1) Ticket per person.**
- **We encourage you to buy additional tickets on the registration form!**
- The last ticket out will receive \$1,000 in cash (additional prizes will be distributed throughout the drawing).

Silent Auction:

- We will have Silent Auction items up for bid.
- **Please consider donating an item to the auction. [Donation Form Attached.](#)**

TICKETS WILL BE COLLECTED AT THE DOOR FOR MONDAY & TUESDAY NIGHT'S EVENTS.

YOU CAN PURCHASE EXTRA TICKETS ON THE REGISTRATION FORM.



TUESDAY ACTIVITIES



BEACHSIDE FUN

Enjoy the perfect beach day with our exclusive setup, complete with chairs, umbrellas, and plenty of activities to keep you entertained. Relax in your own private area, whether you're soaking up the sun or diving into fun beach games and water sports. This is our most popular event, offering the ideal mix of relaxation and excitement for an unforgettable day by the shore!

\$45 per person. The registration fee includes ONE lounge chair, a shared umbrella and an assortment of snacks and beverages. The reservation will also include four kayaks or paddleboards.



GOLF TOURNAMENT

Join us for a tournament at Lost Key Golf Club, an 18-hole Arnold Palmer Championship course offering a top-tier golf experience. Redesigned in 2006, the par 71 course features Sea Dwarf Paspalum grass for excellent playing surfaces. With five sets of tees, it provides a unique challenge for golfers of all skill levels. Don't miss this exciting opportunity!

\$175 registration fee includes cart, green fee, range balls, boxed lunch and prizes.



IN-SHORE FISHING

Experience the thrill of inshore fishing, where the calm morning waters offer the perfect opportunity to reel in your catch of the day. Whether you're a seasoned angler or a beginner, this early adventure promises a peaceful, rewarding time on the water, surrounded by stunning views and abundant marine life. Don't miss the chance to start your day with a great fishing experience!

There will be 4 fishers per boat. The \$200 registration fee includes everything you need to fish and enjoy the day. Participants will need to meet at Zeke's Marina 30 minutes early.



GAME NIGHT

What better way to wrap up the convention than with delicious food and plenty of fun! Enjoy a fantastic dinner buffet, followed by an exciting, family-friendly show that's sure to entertain everyone.

Get ready for an epic showdown at our 1776-themed party, where it's all about patriotism, fun, and a friendly but competitive game of Family Feud! Louisiana vs. Alabama—who will come out on top? Dress to impress as your favorite forefather, political figure or in your best red, white and blue. Join us for a lively, all-American battle of wits with plenty of laughs and bragging rights on the line! This event is packed with excitement, perfect for the whole family to enjoy.



APGA/LPGA Summer Convention: AGENDA

Sunday, June 29

Time

4:30 p.m. - 7:00 p.m.

6:00 p.m. - 7:00 p.m.

Event

Registration

Welcome Reception

Monday, June 30

Time

8:00 a.m. - 8:15 a.m.

8:00 a.m. - 8:30 a.m.

8:30 a.m. - 10:45 a.m.

11:00 a.m. - 12:30 p.m.

11:00 a.m. - 12:30 p.m.

12:30 p.m. - 8:00 p.m.

8:00 p.m. - 8:15 p.m.

8:15 p.m. - 10:00 p.m.

Event

Alabama Suppliers Meeting

Welcome Reception and Breakfast

Joint Seminars

Alabama General Membership/Board of Directors Meeting

Louisiana Committee Meetings and General Membership/
Board of Directors Meeting

On-your-own fun

State Awards

Dessert Extravaganza Event: Night hosted by Miss America featuring the Roast of Randy Hayden, followed by the Ticket Giveaway & Silent Auction (*Fundraiser for the David Reaves, Don Haden Bill Montgomery and Marie Daniel Scholarships*)

Tuesday, July 1

Time

6:00 a.m. - 10:00 a.m.

TBA

9 a.m. - 4 p.m.

6:30 p.m. - 10 p.m.

Event

In-Shore Fishing (*Zeke's Landing and Marina*)

Golf Tournament (*Lost Key Golf Club*)

Beachside Fun with Kayaks or Paddleboards and Classic Games

Party Like It's 1776 Dinner and Game Night featuring Family Feud

All Convention Events are Resort Casual

ADVANCED REGISTRATION

Alabama/Louisiana Convention

Perdido Beach Resort,
Orange Beach, AL.
JUNE 29 - JULY 1, 2025

Name: _____
Spouse/Significant Other: _____
Company: _____
Cell Number: _____
Email: _____
Spouse Email: _____

Single Registration \$495 \$ _____

(Includes 1 Reverse Raffle Ticket, Welcome Reception, Meetings, Dessert Extravaganza, and Dinner.)

Couple Registration \$850 \$ _____

(Includes per person 1 Reverse Raffle Ticket, Welcome Reception, Meetings, Dessert Extravaganza, and Dinner.)

CONVENTION ACTIVITIES

MONDAY

NUMBER

Extra Ticket \$50 _____ \$ _____

Exhibitor Table (unmanned) \$100 _____ \$ _____

(Deadline to register is June 1, 2025.)

TUESDAY *(Deadline to register for activities is June 1, 2025.)*

1/2 Day In-Shore Fishing \$200 _____ \$ _____

Beachside Fun. \$45 _____ \$ _____

(Includes 1 beach chair, a shared umbrella, paddleboard or kayak and snacks and beverages.)

Golf Tournament \$175 _____ \$ _____

(Includes cart, green fee, range balls and a boxed lunch.)

Names

Handicap

TICKETS WILL BE COLLECTED AT THE DOOR FOR MONDAY & TUESDAY NIGHT EVENTS.

ADDITIONAL TICKETS *(Available for family members/guests not involved in the propane industry and therefore not paying convention registration fees.)*

MONDAY

Dessert Extravaganza *(included in registrations above)*

Extra Adult Ticket \$50 _____ \$ _____

Child Ticket (17 and under) Free _____

TUESDAY

Dinner *(included in registrations above)*

Extra Adult Ticket \$150 _____ \$ _____

Young Person's Buffet (12 and under) \$75 _____ \$ _____

Total Registration Amount \$ _____

NON-MEMBERS - Individuals from non-member companies will be charged a \$200 additional convention registration fee. Please add this charge to your Total Registration Amount.

MasterCard _____ VISA _____ American Express _____ Discover _____

Name on Card: _____

Card Number: _____

Exp. Date: _____ Billing Zip Code: _____

CVV#: _____ (last 3 digits on back or 4 digits on front above # for American Express)

Signature: _____

Cancellation Policy

Since we must give a guaranteed number of attendees for events several days in advance, the cancellation policy will be as follows:

- **GUESTS CAN CANCEL NO PENALTY UNTIL JUNE 24, 2025.**
- **CANCELLATIONS AFTER THIS POINT WILL RESULT IN ONE NIGHT'S ROOM AND TAX CHARGE.**

**If you email your registration form, you are considered pre-registered and must call to cancel your registration.



Hotel Information:

To make your room reservation at the Perdido Beach resort for June 29th-July 1st, call:

866-203-6757

Be sure to indicate that you are with the Louisiana/Alabama Propane Gas Association Convention.

Online Reservations:

You must use the link below to get the special group rate.

[Click to Book Your Room Now!](#)

Room Prices Starting at \$329

(There is limited availability on rooms for dates before and after at the same room block rate.)

ROOM RESERVATION DEADLINE IS MAY 30, 2025.

Return Form and Payment to:

Louisiana Propane Gas Association

P.O. Box 84363

Baton Rouge, LA 70884

(504) 206-1869

madison@ccilouisiana.com

ALABAMA/LOUISIANA Propane Gas Associations

Summer Convention Scholarship Fundraiser

Item To Be Donated To the LPGA/APGA Silent Auction July 1, 2025

Name: _____

Company: _____

Email: _____

Item Description: _____

Value of Item: \$ _____

**PLEASE RETURN YOUR COMPLETED
DONATION FORM TO LPGA BEFORE
THE CONVENTION. BRING ITEM TO THE
REGISTRATION DESK ON JUNE 30TH.**

THANK YOU!

marica@ccilouisiana.com
(337) 207-2189

madison@ccilouisiana.com
(504) 206-1869

